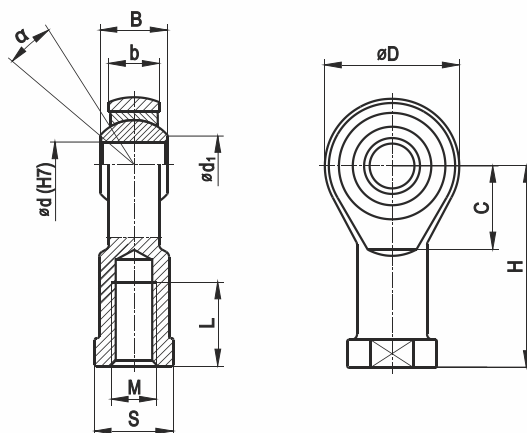


ROD ENDS WITH FEMALE THREAD

A standard draw-rod head consists of a cast steel L600 body and self-lubricating spherical plain bearings - sliding steam steel/bronze sintered with the addition of graphite, saturated with service oil. Operating temperature up to 120°C. The rod ends are used in machines and technical equipment with fluctuating movements in the light, food, printing, paper, tobacco, and transport industries. We also offer a stainless steel version.



Delivery status:

Ready to install. Outer ring made of sintered bronze saturated with operating oil, do not wash. Protected by maintenance oil, packed in corrosion inhibited anti-corrosion paper.

Dimensions											Bearing designation ¹⁾	
d	D	B	b	H	C	S	M ²⁾	L	d ₁	α		
mm	mm	mm	mm	mm	mm	mm	mm	mm	mm	grades		
5	21	9	6,8	30	13	11	M5	12	9,4	13	PGIKR 5	PGIKL 5
6	21	9	6,8	30	13	11	M6	12	9,4	13	PGIKR 6	PGIKL 6
8	24	12	9	36	14,9	14	M8	15	10,6	14	PGIKR 8	PGIKL 8
10	29	14	10,5	43	16	17	M10	20	12,8	13	PGIKR 10	PGIKL 10
							x1,25				PGIKR 10/X1,25	PGIKL 10/X1,25
12	32	16	12	50	19,2	19	M12	23	15	13	PGIKR 12	PGIKL 12
							x1,25				PGIKR 12/X1,25	PGIKL 12/X1,25
14	42	21	15	64	25	22	M14	28	19,2	15	PGIKR 14	PGIKL 14
16	42	21	15	64	25	22	M16	28	19,2	15	PGIKR 16	PGIKL 16
							x1,5				PGIKR 16/X1,5	PGIKL 16/X1,5
18	50	25	18	77	26	30	M18x1,5	33	24,9	15	PGIKR 18	PGIKL 18
20	50	25	18	77	26	30	M20x1,5	33	24,9	15	PGIKR 20	PGIKL 20
25	60	31	22	94	32	36	M24x2	42	29,5	15	PGIKR 25	PGIKL 25
30	70	37	25	110	37	41	M27x2	51	34,8	17	PGIKR 30	PGIKL 30
35	80	43	28	125	41	50	M36x2	56	40,3	17	PGIKR 35 ²⁾	PGIKL 35

1) For heads with right-hand thread, marking R, e.g. PGIKR 10. For heads with left-hand thread, marking L, e.g. PGIKL 10.

2) PGIKR (L) 35 steel/steel with re-lubrication.